

0391-019

ENCLAVE AT BOYNTON WATERS - REPLAT NO. 1

90

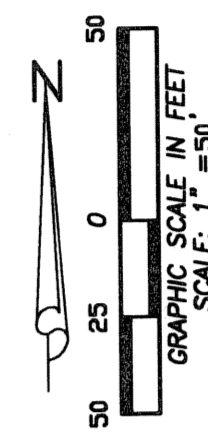
AT LAKES OF BOYNTON BEACH P.U.D., POD B
SITUATE IN SECTION 22, TOWNSHIP 45 SOUTH, RANGE 42 EAST, PALM BEACH COUNTY, FLORIDA
BEING A REPLAT OF LOTS 1 THROUGH 9, INCLUSIVE, OF ENCLAVE AT BOYNTON WATERS, AS RECORDED IN PLAT
BOOK 99, PAGES 105 THROUGH 109, INCLUSIVE, OF THE PUBLIC RECORDS OF PALM BEACH COUNTY, FLORIDA
AUGUST, 2005
SHEET 2 OF 2

STATE OF FLORIDA
COUNTY OF PALM BEACH
THIS PLAT WAS FILED FOR
RECORD AT _____

THIS _____ DAY OF _____
A.D. 2005 AND DULY RECORDED
IN PLAT BOOK _____ ON
PAGES _____ THROUGH _____

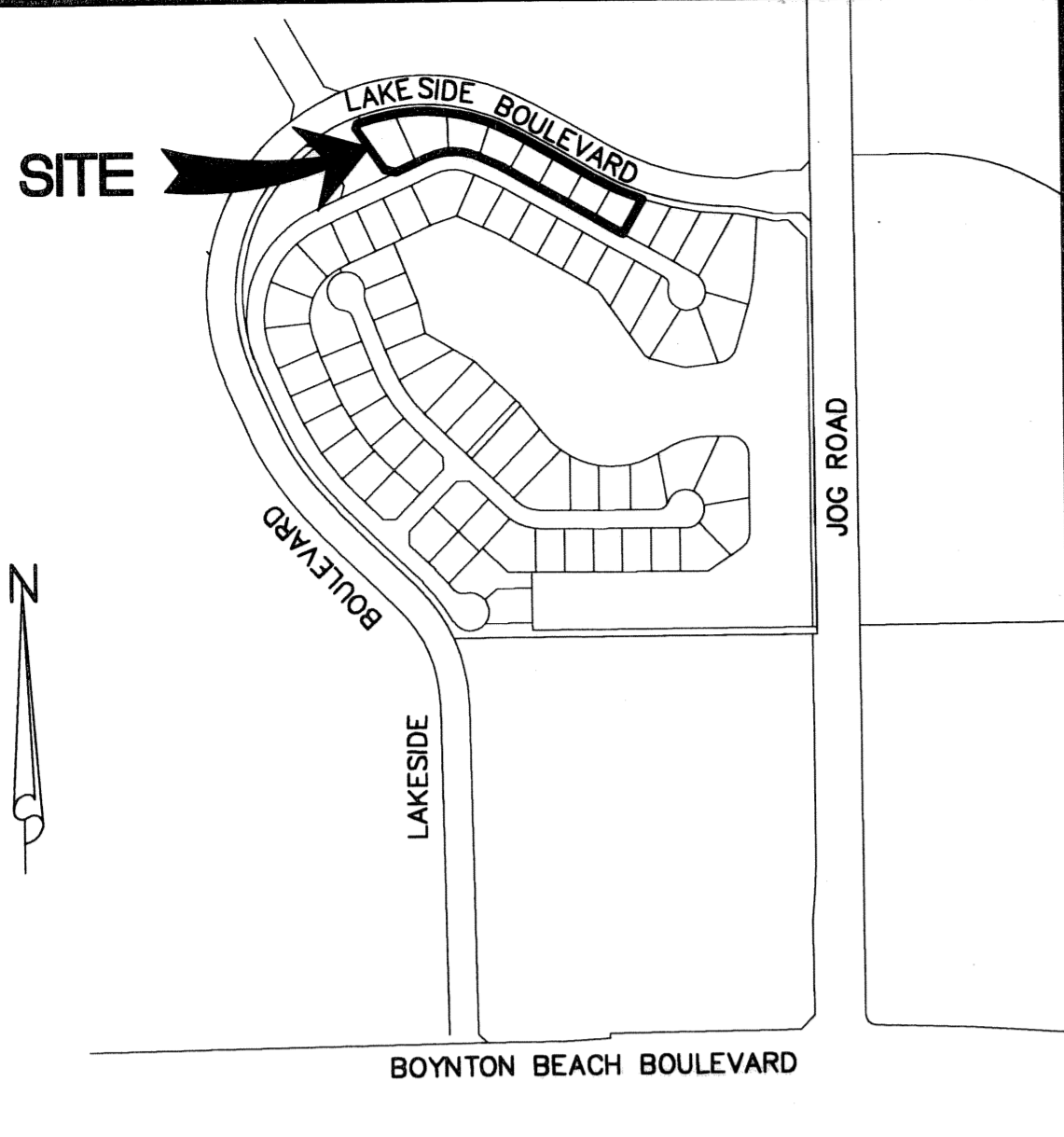
SHARON R. BOCK, CLERK
AND COMPTROLLER

BY: _____
DEPUTY CLERK

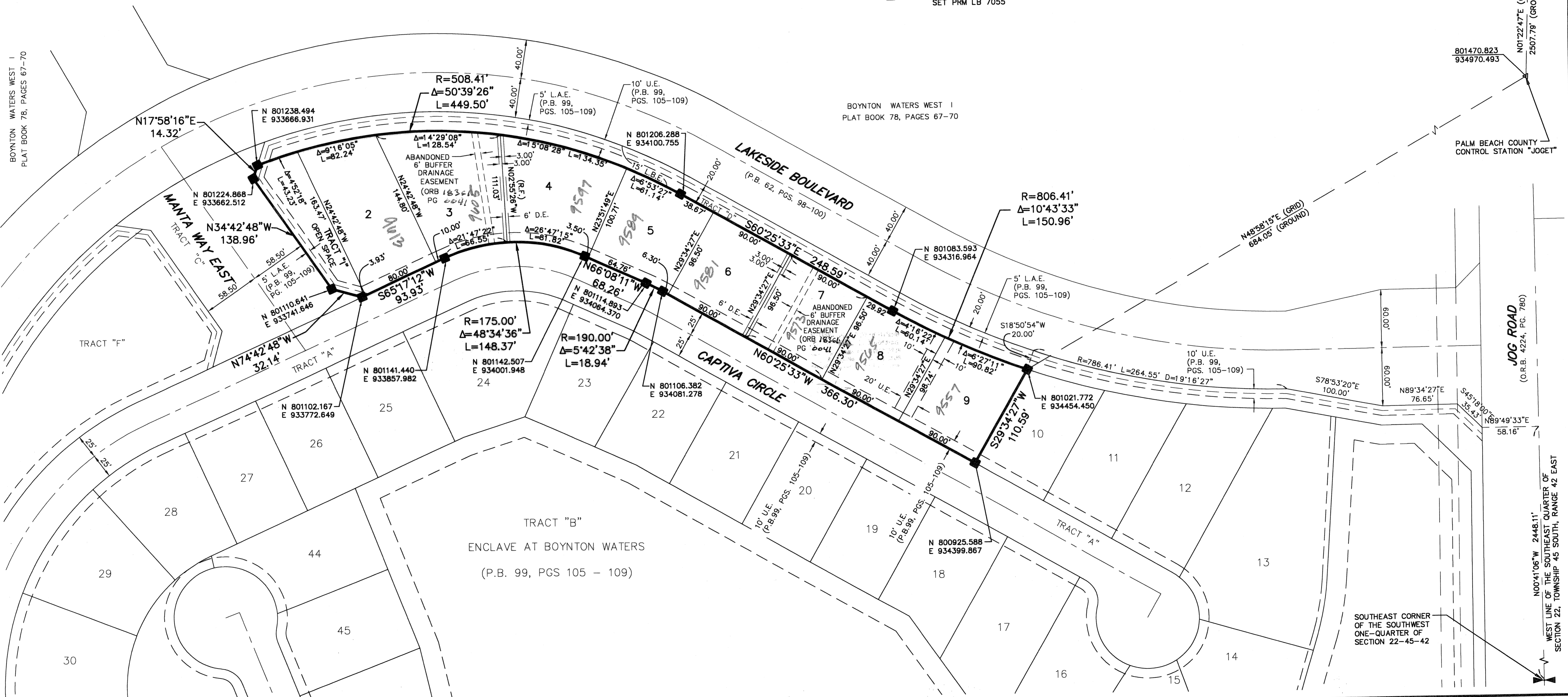


LEGEND

- D.E. = DRAINAGE EASEMENT
- R = RADIUS
- Δ = CENTRAL ANGLE/Delta
- L.A.E. = LIMITED ACCESS EASEMENT
- L = ARC LENGTH
- L.B.E. = LANDSCAPE BUFFER EASEMENT
- O.R.B. = OFFICIAL RECORDS BOOK
- P.B. = PLAT BOOK
- PGS. = PAGES
- U.E. = UTILITY EASEMENT
- = PERMANENT REFERENCE MONUMENT (PRM)
SET PRM LB 7055



LOCATION MAP



BOYNTON WATERS WEST I
PLAT BOOK 78, PAGES 67-70

BOYNTON WATERS WEST I
PLAT BOOK 78, PAGES 67-70

803977.959
935030.827
PALM BEACH COUNTY
CONTROL STATION "CIBA"

801470.823
934970.493
PALM BEACH COUNTY
CONTROL STATION "JOGET"

JOG ROAD
(O.R.B. 4224, PG. 780)

SOUTHEAST CORNER
OF THE SOUTHWEST
ONE-QUARTER OF
SECTION 22-45-42

N00°41'06"W 2448.11'
WEST LINE OF THE SOUTHEAST QUARTER OF
SECTION 22, TOWNSHIP 45 SOUTH, RANGE 42 EAST

SUBDIVISION ENCLAVE AT BOYNTON WATERS - REPLAT 1
BOOK 106 PAGE 90
FLOOD MAP # 1654
ZONING RS
QUAD # 35
ZIP CODE 33437
SE TAZ 443
PUD NAME LAKES OF BOYNTON BEACH

Wantman Group, Inc.
Engineering ♦ Surveying ♦ Mapping
2035 VISTA PARKWAY, SUITE 100
WEST PALM BEACH, FL 33411
(561) 687-2220 phone (561) 687-1110 fax
CERT No. 6091 - LB No. 7055